

**2022 WAPC contest rule significantly modified:**

1. Separated from MIX mode to SSB mode and CW mode :
  - a) SSB mode: Third full weekend of April, UTC 0600 SAT-UTC 0559 SUN
  - b) CW mode: First weekend of October, UTC 0600 SAT-UTC 0559 SUN
2. Scoring:
  - a) 1 point same continental, 3 points different continental
  - b) 2X 10m and 40m band, 4X in 80m band
  - c) 2X Chinese station including BY BV VR2 XX8( BS7H BV9P etc)

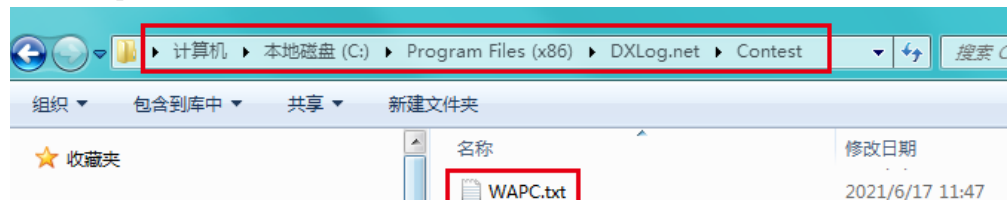
**WAPC contest is supported by following logging software:**

1. DXLOG:

<http://dxlog.net/sw/files/DXLog.net-2.5.16.msi>,

- a) Download DXLOG contest support module: **WAPC.txt** (downloaded file package)  
Copy this file to “CONTEST” folder where DXLOG installed.

For example C:\PROGRAM FILES(X86)\DXLOG.NET\CONTEST\



- b) Download DXLOG WAPC history file: **WAPC\_db.txt** (downloaded file package)  
Copy this file to “DATABASE” folder where DXLOG installed.

For example C:\PROGRAM FILES(X86)\DXLOG.NET\Database\



2. EI5DI's SD:

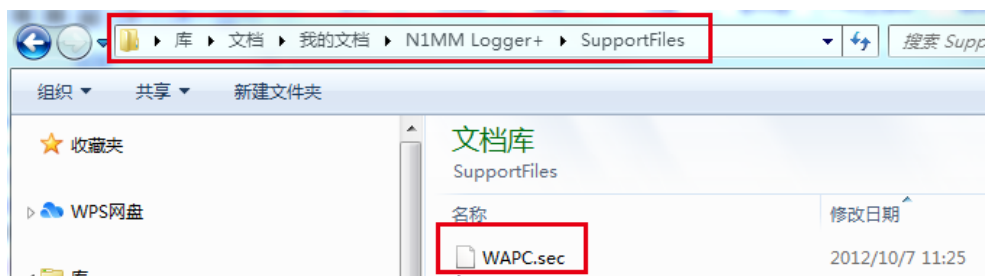
<http://www.ei5di.com/sd/sdsetup.exe>。

3. N1MM logger +:

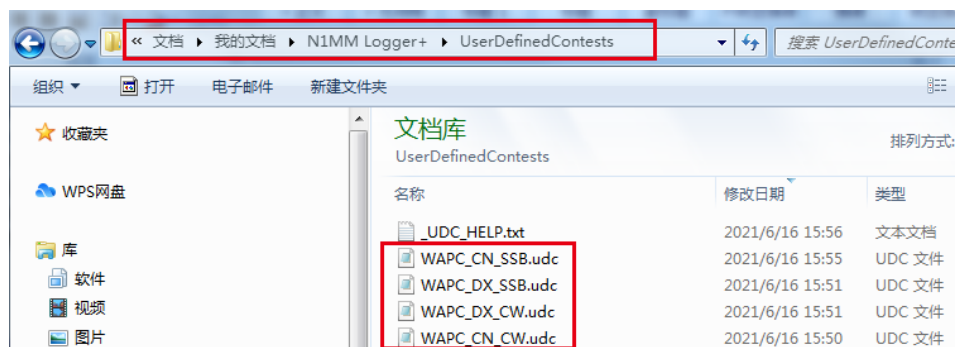
<https://n1mmwp.hamdocs.com/mmfiles/n1mm-logger-full-installer-1-0-8954-feb-2-2021/>

Latest update: <https://n1mmwp.hamdocs.com/mmfiles/categories/programlatestupdate/>

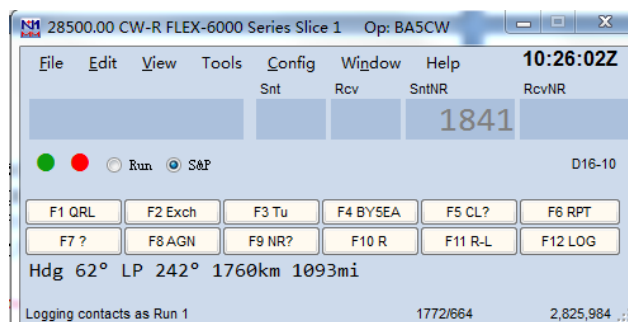
- a) Copy **WAPC.SEC** file to “SUPPORTFILES” folder of N1MM logger root directory



- b) Copy **WAPC\_SSB\_DX.UDC** and **WAPC\_CW\_DX.UDC** file to “USERDEFINEDCONTESTS” folder of N1MM root directory

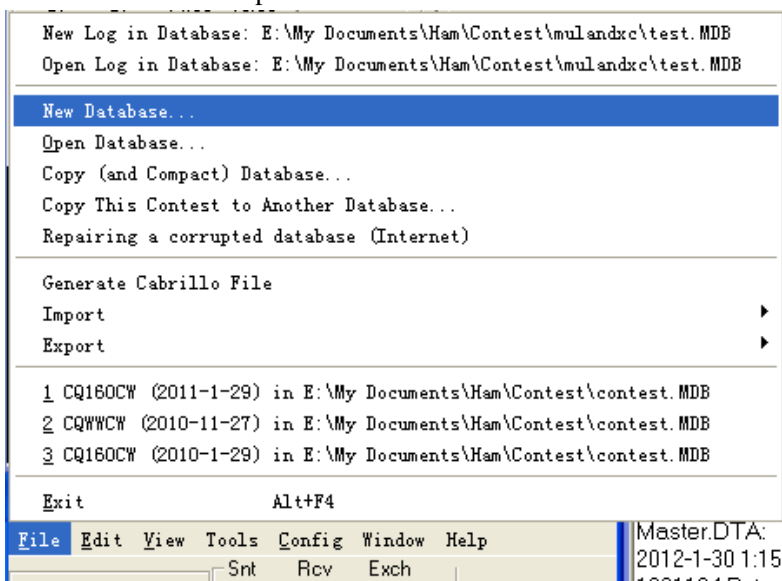


- c) Open the N1MM software



Select File menu in the entry window

- d) Create a new database or open an exist database



e) Create a new contest log

New Log in Database: E:\My Documents\Ham\Contest\mulandxc\test.MDB  
 Open Log in Database: E:\My Documents\Ham\Contest\mulandxc\test.MDB

---

New Database...  
 Open Database...  
 Copy (and Compact) Database...  
 Copy This Contest to Another Database...  
 Repairing a corrupted database (Internet)

---

Generate Cabrillo File  
 Import  
 Export

---

1 CQ160CW (2011-1-29) in E:\My Documents\Ham\Contest\contest.MDB  
 2 CQWWCW (2010-11-27) in E:\My Documents\Ham\Contest\contest.MDB  
 3 CQ160CW (2010-1-29) in E:\My Documents\Ham\Contest\contest.MDB

---

Exit Alt+F4

f) Select the Contest name and setting parameters

contest.s3db

**Select Contest Type for New Log**

Log Type: WAPC\_CNSSB  
 Start Date: 2022-03-12 00:00:00

Total number of contacts in database: 35828

Contest: Associated Files

Category: Show Setup Show Reset

Operator: SINGLE-OP  
 Band: ALL  
 Power: HIGH  
 Mode: SSB  
 Overlay: N/A  
 Station: FIXED  
 Assisted: ASSISTED  
 Transmitter: ONE  
 Sent Exchange: Province  
 Operators: BA5CW  
 Soapbox

Select WAPC\_DXSSB Or WAPC\_DXCW contest

Only single operator is allowed for DX stations

Select single band or all band

Select input power

Select mode SSB or CW

001 for Dx participants  
 Province abbreviation for local participants

Callsign of the operator

More than 100W	Less than 100W	Less than 5W
SOAB	SOAB LOW	SOAB QPR
S010	S010 LOW	S010 QPR
S015	S015 LOW	S015 QPR
S020	S020 LOW	S020 QPR
S040	S040 LOW	S040 QPR
S080	S080 LOW	S080 QPR